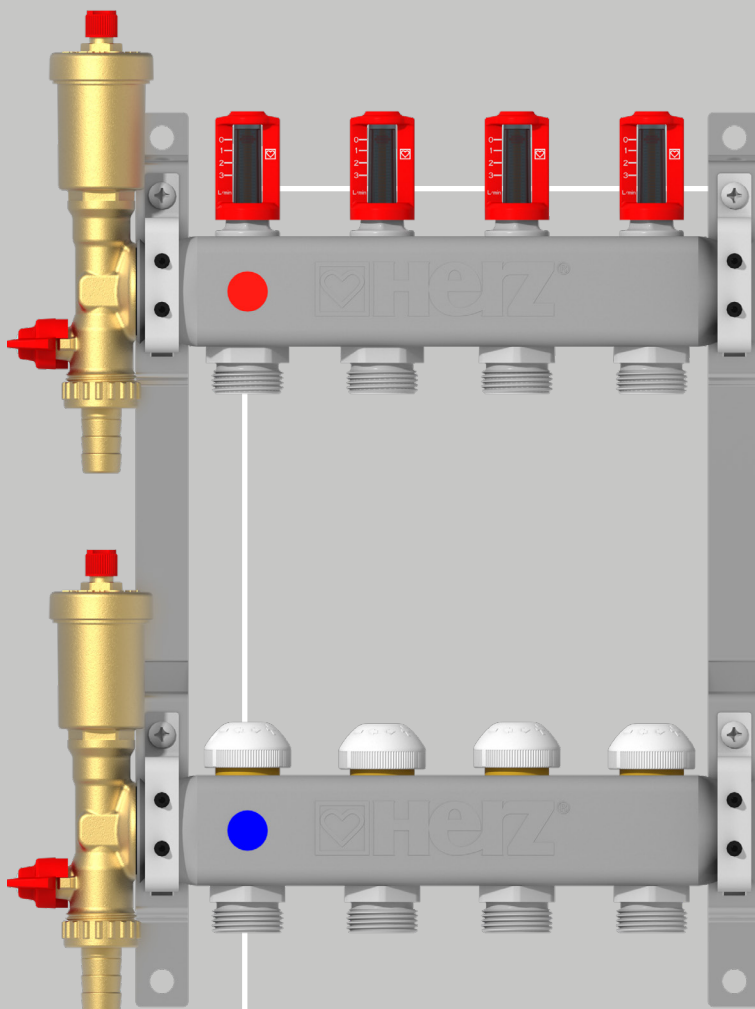


BEST CHOICE

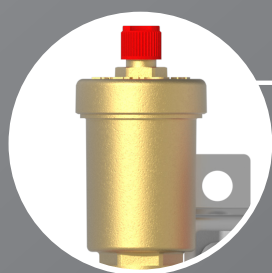
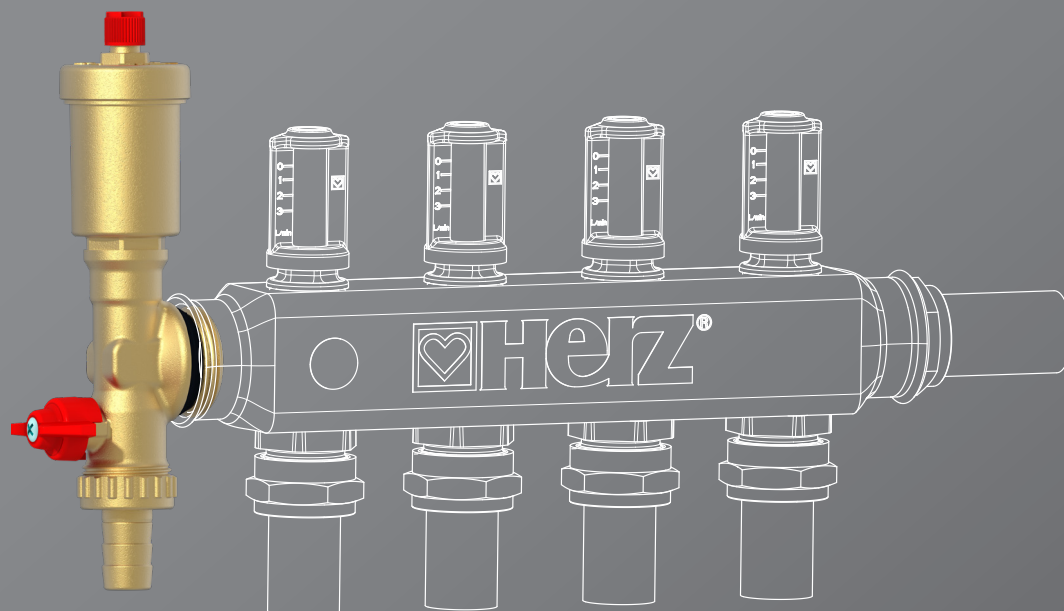


8638
8639

STAINLESS STEEL MANIFOLD WITH AUTOMATIC
VENTING AND FILLING UNIT



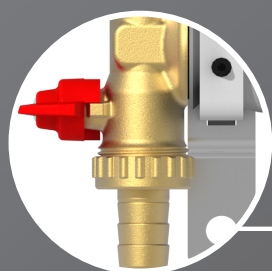
Stainless steel manifold with automatic venting and filling unit



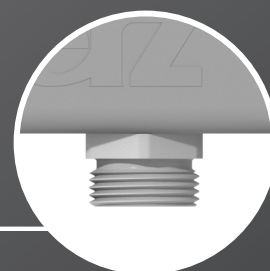
Automatic venting



3 l/min
6 l/min

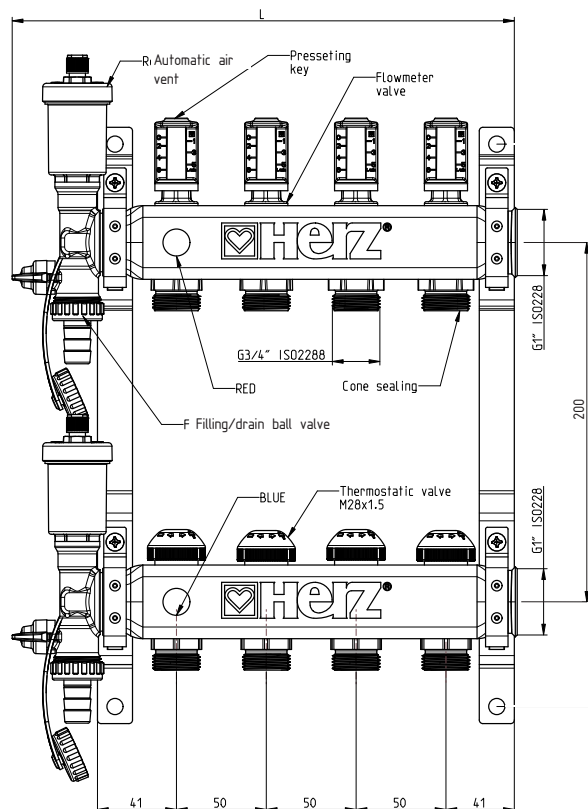


Fill / Drain

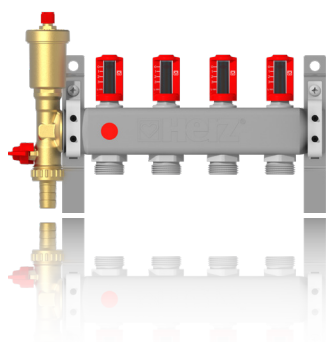


G 3/4"
Euro cone

Number of circuits	L [mm]
2	194
3	244
4	294
5	343
6	393
7	443
8	493
9	543
10	593
11	643
12	693
13	743
14	793
15	843
16	893

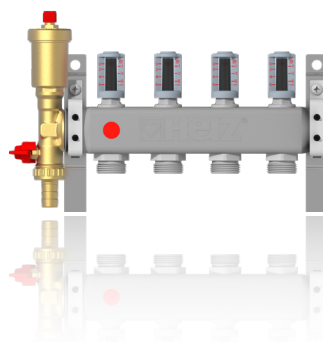


From 2 to 16 circuits:



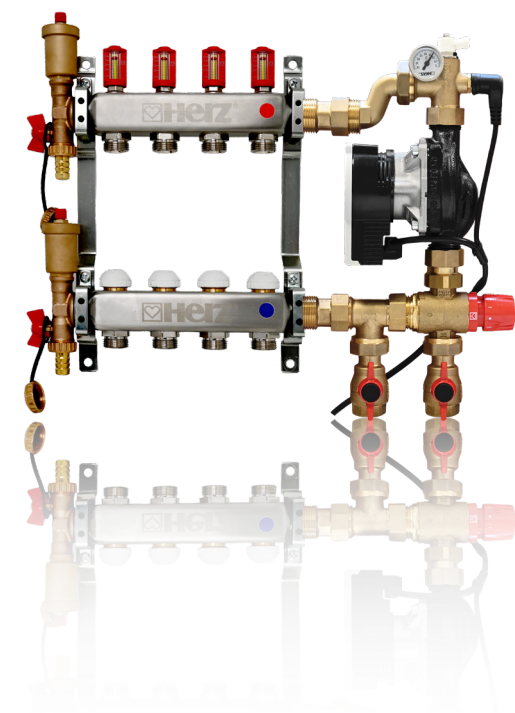
3 l/min

From 1 8638 02
to 18638 16



6 l/min

From 1 8639 02
to 1 8639 16



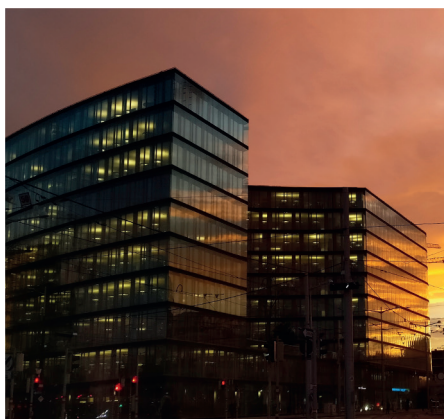
Technical data:

Max. Operating pressure	6 bar
Max. Operating temperature	70°C
Min. operating temperature	2°C
Internal side connection	G1" acc. To ISO228-1
External bottom connesctions	G3/4" acc. To ISO228-1, euro cone
Sealings	EPDM

Other features:

- Automatic venting through automatic air vent
- Filling/Draining system through ball valve
- Garden hose connection on ball valve
- Flow meters: 3 or 6 l/min

Our products are of the highest quality, tested by tens of thousands of professional installers worldwide. This is further confirmed and validated by numerous implementations in various construction sectors.



HERZ d.o.o.
Grmaška cesta 3, 1275 Šmartno pri Litiji
tel: +386 1 896 21 02, e-mail: info@herz.si

www.herz.si

European Company. Since 1951.